

Product Data Sheet

OVERVIEW

Simulate your **ABB/Bailey Net 90/ Infi 90/Harmony DCS** on a PC. Run binary controller **CFG** files as-is, without a need to change or translate them. Connect an **ABB, Previs** or third party operators console to an emulated **CIU**. Use external process **IO**, or simulated **IO**, or map to internal data. Use **Composer^{IT}**, **WinCAD** or other **EWS** software.

ABB/Bailey DCS function at a fraction of the cost !!

APPLICATIONS

OTS Version - Realistic Operator Training Simulator with the *actual* controller files from your **DCS**, the *same* operator console as in the **MCR**, & your choice of process simulation.

EWS Companion Version - Develop and test control logic before using it.

HMI Test Version - Test operators console before **MCR** installation.

▶ Bailey DCS Simulator

BENEFITS

Bailey DCS function at a fraction of the cost !
Re-use existing simulator hardware in main **DCS** and avoid buying more.

Connect your existing operator console without change. Costs less and works just like in the **MCR**. Converted console available too.

No need to translate or change **CAD** or **CFG** files. Maintain logic easily with **Composer^{IT}** or **WinCAD EWS** tools.

Change operating state in seconds by simply restoring a state file (e.g. change from **100MW** state to **300MW** state in < 10 sec)

Free demo version available.

FEATURES

Supports **159+** most common **Function Codes**
To **100+** controllers and **8 CIU** on a single PC

Simulates serial and **SCSI CIU (INICT03)**

Supports most native **ABB** operator consoles

Supports **Previs** consoles via **TCP/IP**

Support **Microsoft Windows XP, 2003**
(**Windows 7 & W2008** support available soon)

Tune specifications from console or **EWS**

ABB Batch-90 Support (pending early 2011)

Connect external process simulator or make internal process simulation

Configure **DCS** to load **CFG** files at startup

Save & restore **DCS** process state in seconds

Watch or Force controller block addresses.

Execute from **0.1 X** to **10 X** real time speeds



P R E V I S E I N C .

Phone (416) 414-9193

E-mail: support@previs.com
www.previs.com

▶ Bailey DCS Simulator

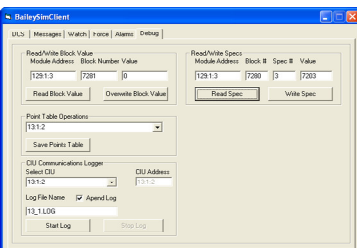
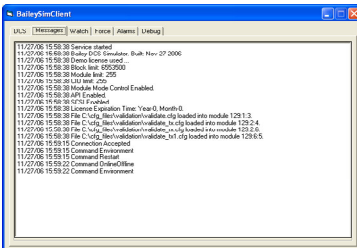
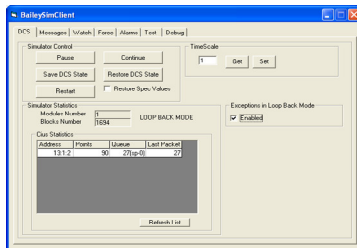
SPECIFICATIONS

FUNCTION CODE SUPPORT	Supports 159+ of the most commonly used function codes. Additional Function Code support being added constantly.
ABB BATCH-90 SUPPORT	Pending early 2011
CONTROLLER SUPPORT	Simulates to 500+ controllers simultaneously. Supports MFC0x, MFP0x, BRCx00 (and older AMM, LMM, COM).
IO SUPPORT	Supports connection of external process simulator via API Read/write over 10,000 IO many times a second. Supports OPC Data Access v2.0 as both client and server. Supports IO Wraparound to connect simulator inputs to outputs.
CIU SUPPORT	Simulates CIU04(serial), INICT03 (serial), INICT03(SCSI) TCP/IP CIU for Previs operator consoles & OPC server Supports to 8 CIU channels simultaneously Protocol includes exceptions, alarms, tuning, polling, controls +
CONSOLE SUPPORT	Conductor NT, OIS4x, 800xA PPA, PPB, and other ABB consoles Up to 8 consoles connected simultaneously
THIRD PARTY CONSOLES	Previs, Wonderware, CiTech, DeltaV, Honeywell & others
EWS TOOLS SUPPORT	.Supports ABB Composer ^{IT} , WinCAD, and more. Monitor CAD sheets live; Tune specifications; Load logic Supports EWS and console operations simultaneously.
OS SUPPORT	Windows XP/2003 (Windows 7 pending). Executes as service
SIMULATOR CLIENT FUNCTIONS	PAUSE, CONTINUE, SAVE/RESTORE STATE (To named file) Read block value; Read/Write tunable specifications and Field IO Simulator health monitoring and troubleshooting Select speed from 0.1X to 10 X; Watch and Force block list
USERS MANUAL	Provided in WORD DOC file format
SYSTEM REQUIREMENTS	Standard PC with XP for 50 controllers/100,000 blocks Call for PC platform guidance > 50 controllers/100,000 blocks
PERFORMANCE BENCHMARK 1	26 controllers , 71K blocks, 1 SCSI CIU, 1 RS-232 CIU 3.2Ghz Intel CPU, Windows XP, <3% CPU load
PERFORMANCE BENCHMARK 2	95 controllers, 170K blocks, 2 SCSI CIU (28K tags), 1 RS-232CIU 3.6Ghz Intel CPU, Windows XP, <6% CPU load.
USB LICENSE KEY	Configures # of Controllers, Blocks, CIU, Module Mode Control, API and SCSI Enable, License Period
EXTENSIVE API	Experienced developers may connect external processes

RUNS AS SERVICE



CLIENT FUNCTION



ORDERING INFORMATION

BSS-BASE	Base Version, licensed for 1 Controller/10,000 blocks/1 CIU. All options enabled. Perpetual license. Includes 90-day warranty and manuals.
BSS-CONTROLLER	Add 1 controller & 10,000 blocks to BSE-Base, to 500+ Controllers
BSS-CIU	Add 1 CIU to BSE-Base, to 8 CIU maximum (Call for SCSI details).
BSS-ESS	Bailey DCS Software Simulator, Extended Service Agreement, 1 Year



PREVISE INC.

Phone (416) 414-9193

E-mail: support@previs.com
www.previs.com