

Product Data Sheet

OVERVIEW

Connect your **Bailey Net 90** or **Infi 90 DCS** to other systems

High speed data from **Bailey DCS**

Connect via **RS232** or **SCSI** with any common **CIU** interface

Easy to install and configure

Translate/Import console tags

POSSIBLE APPLICATIONS

Acquire Data to Process Historian

Bridge from one Loop to another

Bridge from **Bailey DCS** to any **PLC**

Load/unload module configurations

▶ Bailey DCS OPC Server

▶ BENEFITS

Bring **Bailey DCS** data to any **OPC** client

Free demo version available

Translate existing database and load easily

Connect multiple **CIU** to one server

ABB SEMAPI not needed

▶ FEATURES

Run as application or as service

To 10,000 tags (**RS-232**) or 30,000 tags (**SCSI**)

Tools support to port existing tag database

On line tag database changes from anywhere

Support **Microsoft Windows 2000, XP, 2003**

Monitor any block output or **Module Status**

Auto-Start with tag database at power-up

Tune any tunable specification

▶ BONUS FEATURE

Configuration & Loading Utility Included:

- **Module MODE** control
- Load/Unload **CFG** files
- Add/Modify/Delete blocks
- Tuning, module status and more..
- Special **STATION** Tuning Screen



P R E V I S E I N C .

Phone: 416-414-9193

E-mail: support@previs.com
www.previs.com

▶ Bailey DCS OPC Server

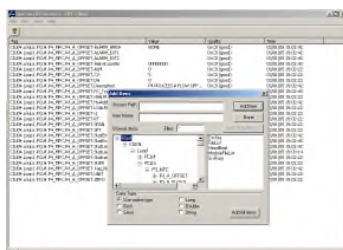
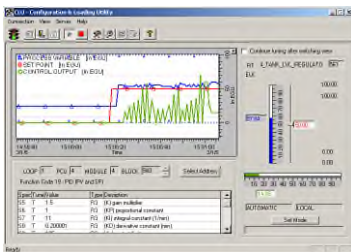
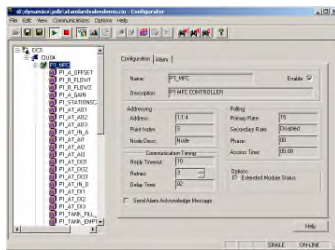
SPECIFICATIONS

CIU SUPPORT	Support multiple CIU connections to one server Via Serial RS-232: CICO1, NCIU01, NCIU02, NCIU03, NCIU04, INICI01, INICI03/03A/13A, IIMCP01, IIMCP02, INPCI02, INICI12 Via High Speed SCSI: INICI03/03A/13A, INICT03, IIMCP02 Via Serial RS-232 or TCP/IP Prevised Bailey DCS Simulator (e.g. for FAT or Operator Training)
TAG DATABASE SIZE	Supports to 30,000 tags (CIU dependant)
TAG TYPES SUPPORTED	Tag Types supported for exception reporting ANALOG (FC30 and others) DIGITAL (FC45 and others) RCM (FC62), RMSC (FC68) STATION (FC80, 21, 22, 23) DD (FC123), MSDD (FC129) RMCB (FC136), TEXT BLOCK (FC151) DAANG (FC177) Polling support: ALL block addresses plus module status OPC Browse Tree: CIU .Loop PCU Module Tag Attribute
DATABASE MAINTENANCE	Provides client tool for making on line tag database changes Perform tag database maintenance from any network location
OPC SPECIFICATION	Compliant to OPC Data Access v2.0 specification
SYSTEM REQUIREMENTS	Minimum recommended PIII 600Mhz, 128MB of RAM
OS SUPPORT	Microsoft Windows 2000, XP or 2003 Supports execution as service or application
DOCUMENTATION	Technical Manual - Bailey DCS Connections Configuration Manual Reference Manual - OPC Interface
ALARMS SUPPORT	All alarms for configured tags are available at OPC interface
AUTO START	Supports auto start with tag database at power up
TUNING SUPPORT	Tuning of all tunable block specifications is supported
MODULE STATUS	Supported, including redundant controller modules
TIME SYNCHRONIZATION	Supported as master, slave, both or neither
CONVERSION SUPPORT	Provides tools for conversion and import of existing tag database
OPC CLIENT	General purpose OPC client application provided
COMMUNICATION STAT'S	Communication performance info provided at OPC interface
ORDERING INFORMATION	
OPS30-CD-OPC	Bailey DCS OPC Server, Perpetual license. Includes 90-day warranty and manuals.
KIT90-INICT03	SCSI adapter card and SCSI cable kit, to connect INICT03 SCSI to PCI bus within PC. Includes 90 day warranty and manuals.
OPS30-OPC-ESS	Bailey DCS OPC Server, Extended Service Agreement, 1 Year

RUNS AS SERVICE



CLIENT FUNCTION



PREVISE INC.

Phone: 416-414-9193

E-mail: support@previs.com
www.previs.com